

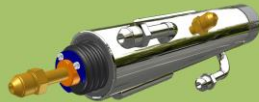


HTT Corporation offers a wide variety of Plasma Arc Torches

Plasma Arc Torch is an integral component of a plasma furnace or a plasma reactor. It generates a directed flow of plasma from its nozzle and can treat all types of waste, including organic and inorganic materials.

HTT Corporation is the leader in design, development and manufacturing of the plasma based waste treatment systems.

High Temperature Technologies Company is a privately-owned firm based in Canada. It offers environmentally-friendly solutions for waste treatment and disposal. Its highly innovative technology is based on plasma arc torch and is suitable for the treatment of liquid, disperse and solid waste. It produces virtually no emissions and is thus one of the most safe and sustainable solutions for waste disposal, available on the market today.



- Cost Competitive
- Environmentally-friendly
- Meets regulatory requirements worldwide
- Produces no emissions or toxic slag
- Simple to operate and requires low maintenance



Montreal, Canada
 www.httcanada.com
 info@httcanada.com
 TEL.1.778.819.8510

Plasma Arc Torches



Intelligent
 Solutions for
 Waste
 Management



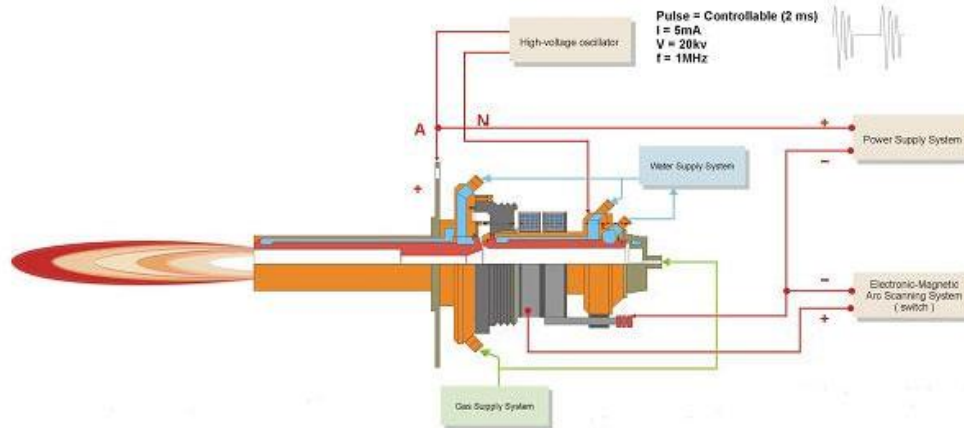
www.httcanada.com

Intelligent Solutions for Waste Management

...THAT MEET YOUR NEEDS AND ENVIRONMENTAL STANDARDS

You decide to create a better future. We make it happen.

Gas Plasma Arc Torch



PLASMA ARC TORCH:

• IS A STRONG STEEL TUBE OF THAT ENCLOSES THE ESSENTIAL COMPONENTS INCLUDING:

- ELECTRODES
- GAS INJECTORS
- INSULATORS
- SPACERS

• USES ANY TYPE OF GAS
(• AIR | • AR | • N₂ | • O₂ | ETC)

• USES COPPER (CU) ELECTRODES

• CAN BE APPLIED AT ANY ANGLE

• CAN OPERATE IN TRANSFERRED AND NON TRANSFER MODES

A HERMETIC SEAL CAN BE APPLIED AROUND THE STEEL SHROUD OF THE TORCH, IF NEEDED.



Technical Characteristics

Model	PPT-50DC	PPT-100AC	PPT-250AC	PPT-300DC	PPT-500DC
Power	50-100kW	100kW	200kW	300kW	500kW
Current	120-250A	300A	500A	500A	600A
Voltage	500V	380V	450V	700V	900V
Gas	-	-	-	-	-
Water	-	-	-	-	-
Electrode	Cuprum	Cuprum	Cuprum	Cuprum	Cuprum
Efficiency	0.75	0.75	0.75	0.8	0.75

Steam Plasma Arc Torch

The new technological application of steam instead of air in plasma torches does not create additional harmful compounds of nitrogen (N, NO_x etc.) during gasification of various wastes and simplifies the clearing system of outlet gases.



Technical Characteristics

Model	PPT-st-100 DC	PPT-st-600DC
Power	100kW	600kW
Current	300A	300A
Voltage	500V	350V
Gas	-	-
Water	-	-
Electrode	-	-
Efficiency	0.65	0.9
Weight	8 kg	80 kg
The Cathode	Tungsten (W)	Tungsten (W)
The Anode	Tungsten (W)	-



HTT CORP. ENRICHES THE ENVIRONMENT BY DELIVERING ADVANCED PLASMA SOLUTIONS TO BUSINESSES AND GOVERNMENTS WORLDWIDE.